



All 4K Inputs **BM-H245** 100% DCI-P3 WCG QLED HD Production Monitor

12G-SDI **4x 3G** **HDMI 2.0** **Quadview**

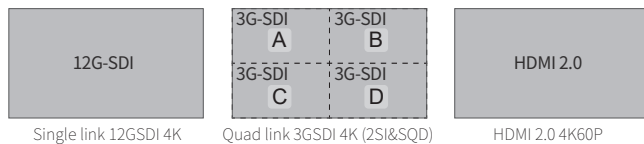
Features

■ 23.8-inch FHD Wide Color Gamut QLED Panel

1920x1080 IPS FHD QLED panel, 100% DCI-P3 coverage Wide Color Gamut, 400nits backlight, 1000:1 contrast, H/V 178° viewing angle for professional productions.

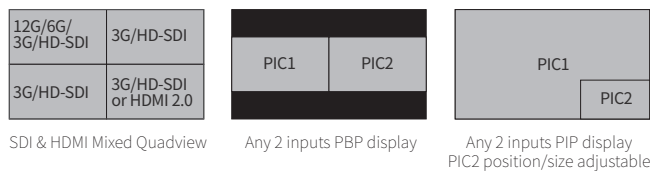
■ All 4K Inputs, Future-proof

Support 12GSDI, Quadlink 4x3GSDI and HDMI2.0 multiple 4K inputs, and pixel-to-pixel zoom-in on the HD panel.



■ Quadview and PBP/PIP view

Support 4x SDI/HDMI mixed multiview and display waveform, vector, audio meters, EOTF, color gamut, UMD for each input. Support 2 inputs PBP or PIP display.

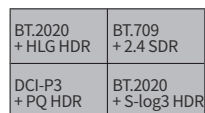


■ HDR/Color Gamut selection, Payload ID auto setting

Gamma 1.0/1.8/2.2/2.4/2.6 or HLG/PQ/Slog3 HDR selection; BT.709, DCI-P3, BT.2020 selection; Payload ID auto set input range, color space, HDR/SDR, color gamut, color depth, etc.

■ Multi Color Gamut & EOTF Viewing

1 input source copied to 4 windows and display different HDR/SDR and color gamut simultaneously.



HDR/SDR simultaneously view

■ 18-bit Processing / Zero Latency

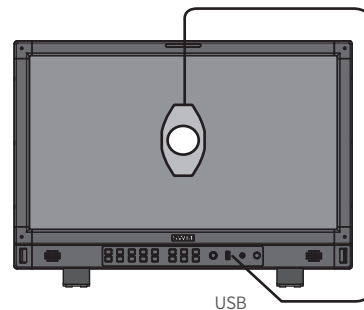
Internal 18-bit signal processing, and less than 1/100 frames audio/video latency for lip-sync monitoring.

■ Delog 3DLUTs & User 3DLUTs Upload

With built-in De-log LUTs including Log-C, S-log2, S-log3, C-log, V-log and RedLogFilm LUTs, to convert Log video to 709 SDR or HLG/PQ HDR. Support User 3DLUTs upload by USB.

■ 3DLUT Auto Self-Calibration

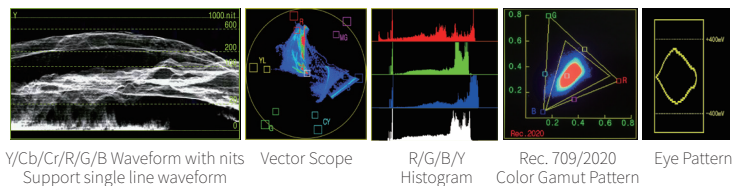
Built-in calibration software, supports X-rite i1 and JETI Specbos 1211 probes directly plug into monitor USB port to auto calibrate. Calibration time: X-rite i1: 15min; Specbos1211: 45min
Calibration result: $\Delta E < 1.0$



Built-in 3DLUT calibration software, Directly connect color sensor probe to monitor USB port, and the monitor will calibrate itself automatically.

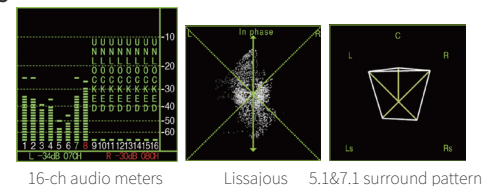
■ Video Assist Patterns, 12GSDI Eye Pattern

Waveform and single line selection, Vector scope, Histogram and unique Color Gamut pattern and Eye pattern for 12GSDI, supports multiple display position, size and color selection for the patterns.



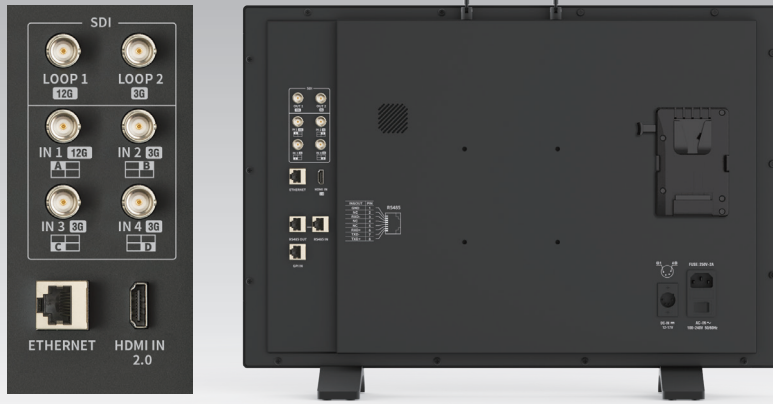
■ Audio Assist Patterns

16-ch audio meters, and select any 2-ch to output via 3.5mm or speakers; Support Lissajous and 5.1/7.1 surround patterns.



■ Others

Focus assist, R/G/B/mono, False color, Zebra, H/V delay, Freeze; 15:9, 14:9, 13:9, 4:3, 2.35:1, 2:1, 1.85:1 and User defined markers; Support TSL 3.1/4.0 UMD and text TALLY display; GPI control and webserver IP control, USB firmware updates.



- ◆ 100% DCI-P3 WCG QLED Panel
- ◆ 4K Inputs: 12GSDI / 4x3G / HDMI 2.0
- ◆ Multi CG/EOTF Simultaneous View
- ◆ Eye Pattern, Surround Sound pattern
- ◆ 3DLUT Self-calibration, $\Delta E < 1.0$

Video Formats

SDI IN1 & LOOP1 (12G)

4096×2160p (60 / 59.94 / 50 / 30 / 29.97 / 25 / 24 / 23.98)
 3840×2160p (60 / 59.94 / 50 / 30 / 29.97 / 25 / 24 / 23.98)
 2048×1080p (60 / 59.94 / 50 / 30 / 29.97 / 25 / 24 / 23.98)
 2048×1080i (50 / 59.94 / 60)
 1080p (60 / 59.94 / 50 / 30 / 29.97 / 25 / 24 / 23.98)
 1080i (60 / 59.94 / 50)
 1080psf (30 / 29.97 / 25 / 24 / 23.98)
 720p (60 / 59.94 / 50)
 480i (59.94) 576i (50)

SDI IN2/3/4 & LOOP2 (3G)

2048×1080p (60 / 59.94 / 50 / 30 / 29.97 / 25 / 24 / 23.98)
 2048×1080i (50 / 59.94 / 60)
 1080p (60 / 59.94 / 50 / 30 / 29.97 / 25 / 24 / 23.98)
 1080i (60 / 59.94 / 50)
 1080psf (30 / 29.97 / 25 / 24 / 23.98)
 720p (60 / 59.94 / 50)
 480i (59.94) 576i (50)

4K Quad-link SDI IN (each channel)

2048×1080p (60 / 59.94 / 50 / 30 / 29.97 / 25 / 24 / 23.98)
 1080p (60 / 59.94 / 50 / 30 / 29.97 / 25 / 24 / 23.98)

HDMI IN (2.0)

4096×2160p (60 / 59.94 / 50 / 30 / 29.97 / 25 / 24 / 23.98)
 3840×2160p (60 / 59.94 / 50 / 30 / 29.97 / 25 / 24 / 23.98)
 1080p (60 / 59.94 / 50 / 30 / 29.97 / 25 / 24 / 23.98)
 1080i (60 / 59.94 / 50)
 720p (60 / 59.94 / 50)

Specifications

Model		BM-H245
Display	Size	23.8 inches
	Panel Type	QLED
	Resolution	1920×1080
	Aspect Ratio	16:9
	Color Depth	10bit
	Internal Processing	18bit
	Viewing angle	H/V 178/178
	Brightness & Contrast	400nits, 1000:1
Input	SDI 1	12G/6G/3G/HD-SDI ×1
	SDI 2/3/4	3G/HD-SDI ×3
	HDMI	HDMI 2.0 ×1
	UMD	RS485×1
	GPI (Tally)	RS485×1
	Ethernet	RJ45×1, 1000M
Output	USB	USB-A×1 – 3DLUT & Firmware
	SDI 1	12G/6G/3G/HD-SDI Loop ×1
	SDI 2	3G/HD-SDI loop ×1
	Analog audio	3.5mm headphone + Speaker
General	UMD	RS485×1
	AC Input	AC 100-240V 50/60Hz
	DC Input	DC 12-17V, V-mount plate
	Power	≤60W
	Working environment	0°C - +40°C; 10% - 90%
	Storage environment	- 15°C - + 60°C; 10% - 90%
	Dimensions	580.9×392.3×73.6mm
Weight	6.7kg	

