

FM series

## Film Production Monitors



**FM-17**

### 17.3" FHD Production Monitor

- ◆ 17.3-inch, 1920×1080, 8-bit LCD, 12-bit process
- ◆ 3G/HD/SD-SDI, HDMI, CVBS monitoring
- ◆ Built-in multi cameras De-log LUTs and DIT LUTs upload by USB
- ◆ Waveform / Vector / Histogram / 16-ch Audio meters / Timecode
- ◆ Peaking / Focus assist / Exposure assist / Zebra / Blue only
- ◆ Anamorphic de-squeeze / Multiple markers
- ◆ Portable, light weight and C-stand setup



**FM-21HDR**

### 21.5" High Bright HDR Production Monitor

- ◆ 21.5-inch, 1920×1080, 8-bit LCD, 12-bit process, 1000nits high bright
- ◆ 3G/HD/SD-SDI, HDMI, CVBS monitoring
- ◆ HDR: HLG/BT.2100 & SMPTE ST 2084/Dolby vision PQ
- ◆ Built-in multi cameras De-log LUTs and DIT LUTs upload by USB
- ◆ Waveform / Vector / Histogram / 16-ch Audio meters / Timecode
- ◆ Peaking / Focus assist / Exposure assist / Zebra / Blue only
- ◆ Anamorphic de-squeeze / Multiple markers
- ◆ Portable, light weight and C-stand setup



**FM-24DCI**

### 24" DCI-P3 Gamut Post Production Monitor

- ◆ 24-inch, 1920×1200, 10-bit LCD, 12-bit process, 100% DCI-P3
- ◆ 3G/HD/SD-SDI, HDMI monitoring
- ◆ Built-in multi cameras De-log LUTs and DIT LUTs upload by USB
- ◆ SDI 1/2 Pic-in-Pic and Pic-by-Pic display
- ◆ Waveform / Vector / Histogram / 16-ch Audio meters / Timecode
- ◆ Peaking / Focus assist / Exposure assist / Zebra / Blue only
- ◆ Anamorphic de-squeeze / Multiple markers

## ■ Features

### De-log LUTs

The FM series monitors pre-loaded camera de-log LUTs that convert the log mode gray image to REC709 color space.

Log mode  
Gray image



Converted  
to REC709

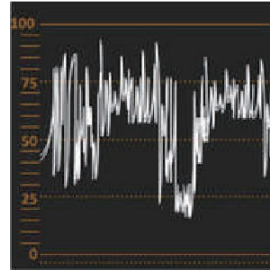


Includes:

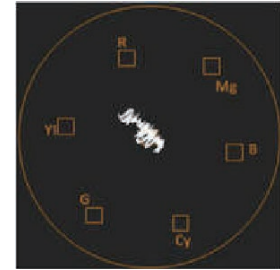
- PANA VLOG V709
- CANON CINCL2 WDR
- CANON CINCL1 WDR
- PANAVISION R709
- SONY SL3C L709A
- SONY SL@ LC709A
- RED RLF RG3
- BMD PC FILM V2
- BMD CC FILM V
- ARRI LOG 70

### Video Scopes

Waveform and Vector Scope can be used for SDI and HDMI. The Waveform can be set for upper and lower luminance threshold levels indicated by color.

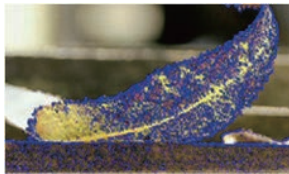


WAVEFORM



VECTOR

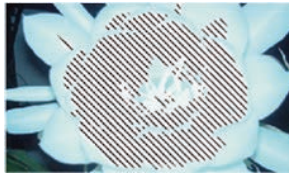
### Video Assist



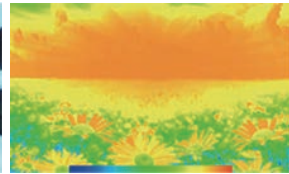
Red/Blue Peaking focus assist



R/G/B/Mono only mode



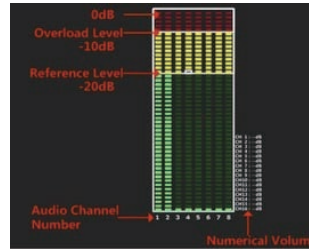
Over exposure zebra stripes



False color with color chart

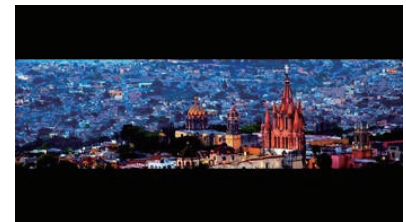
### Audio Meters

Up to 16 Channels of SDI embedded or 2 channels of HDMI audio levels can be displayed with a choice of options including level reference settings and gain.



### Anamorphic De-squeeze

Enables de-squeeze the image from a camera utilizing anamorphic lens, Aspect Formats:  
16x9,  
4x3,  
x1.3 Anamorphic De-Squeeze  
x2.0 Anamorphic De-Squeeze  
x2.0 MAG Anamorphic De-Squeeze



## ■ Specifications:

	Model	FM-17	FM-21HDR	FM-24DCI
<b>Display</b>	Size	17.3-inch	21.5-inch	24-inch
	Resolution	1920x1080	1920x1080	1920x1200
	Color depth	8-bit panel, 12-bit process	8-bit+2FRC panel, 12-bit process	10-bit panel, 12-bit process
	Color gamut	REC709	REC709	DCI P3
	Brightness	300nits	1000nits	250nits
	Contrast	800:1	1000:1	1000:1
	Backlight	LED	LED	LED
	Viewing angle	H/V 178°	H/V 178°	H/V 178°
<b>Input</b>	SDI	3G/HD/SD-SDI×2	3G/HD/SD-SDI×2	3G/HD/SD-SDI×2
	HDMI	HDMI 1.3×1	HDMI 1.3×1	HDMI 1.3×1
	Analog video	CVBS×1	CVBS×1	—
	Analog audio	3.5mm×1	3.5mm×1	—
<b>Output</b>	SDI	3G/HD/SD-SDI×1	3G/HD/SD-SDI×1	3G/HD/SD-SDI×2
	Analog audio	3.5mm×1; 4Ω5W speaker×2	3.5mm×1; 4Ω5W speaker×2	3.5mm×1; 4Ω5W speaker×2
<b>Power</b>	AC input	AC 100-240V 50/60Hz	AC 100-240V 50/60Hz	AC 100-240V 50/60Hz
	DC input	DC 11-17V/3A	DC 11-17V/3A	DC 12-17V/5A
	DC output	—	—	5V/1A USB×2; 12V/1.5A Batt out×1
	Power consumption	14W	55W	63W